



**SIERRA  
PACIFIC**  
WINDOWS

# ALUMINUM CLAD WOOD

## COMMON PRODUCT FEATURES & ACCESSORIES

Section 1: Finishes	3
Exterior	4
Interior	5
Section 2: Wood Species	7
Section 3: Glass / Decorative Glass	9
Section 4: Grilles	11
Section 5: Hardware	13
Section 6: Exterior Trim (Brickmould, Mull Cover, Trim Extender, Drip cap)	15
Clad	16
Section 7: Interior Decorative Trim (Casing, Mull Covers, Jamb Extension)	17
Section 8: Screens	23



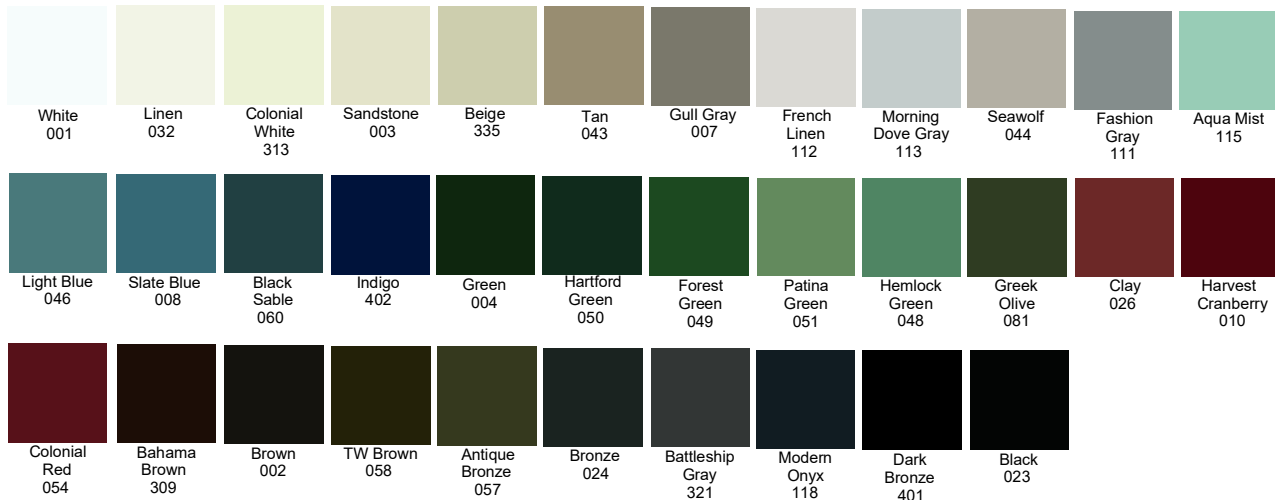
# SECTION 1

# FINISHES

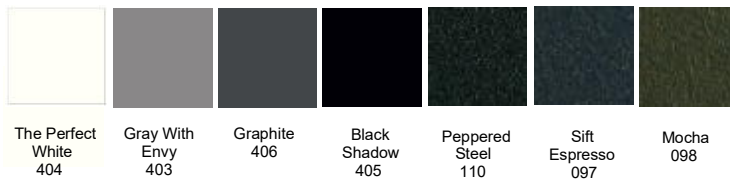


## EXTERIOR AND INTERIOR

### Color Stay™ Collection



### Matte Textured



### Blended Collection



### Metallic Collection



### Powder Coated Finishes

Collections are AAMA 2604 or AAMA 2605  
Depending on Product Line.

Matte Textured Finish is AAMA 2604 only.

Finish samples are approximate and colors on screen can vary. Contact a Sierra Pacific representative for samples.

## Ultra Coat Paint



White



Black



Dried Thyme



Creamy



Requisite  
Gray



Accessible  
Beige



Urbane  
Bronze



Iron Ore



Deep Forest  
Brown



Anchors  
Aweigh

## Ultra Stain



Clear Coat



Toffee

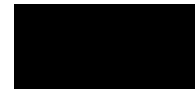


Espresso

## Primed



White



Black

Finish samples are approximate and colors on screen can vary. Contact a Sierra Pacific representative for samples.





## SECTION 2

# WOOD SPECIES



## WOOD INTERIOR



Pine



Douglas Fir



Maple



White Oak



Cherry



Alder



Black Walnut



Mahogany

Finish samples are approximate and colors on screen can vary. Contact a Sierra Pacific representative for samples.



## SECTION 3

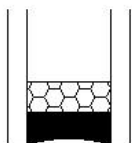
# GLASS AND GLAZING



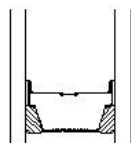
## COATINGS, DECORATIVE GLASS, TINTS



## Glass Spacer

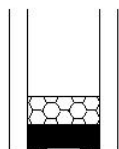


Black Warm  
Edge Spacer

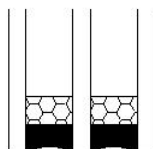


Black Endur  
Spacer

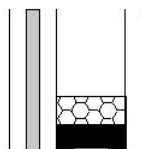
## Glazing Options



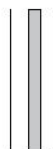
Dual  
Insulated



Triple  
Insulated



Dual  
Insulated  
Laminated



Single Pane  
Laminated



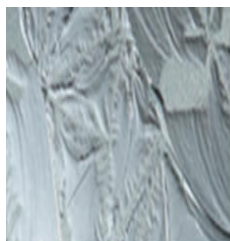
Single  
Pane

NOTE: Not all glass options are available on every product type. Other options may be available upon request.

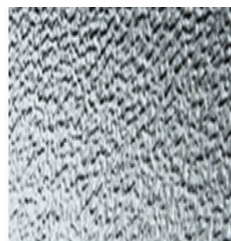
## Low-E Coatings

Low-E 272, Low-E 366, Low-E 340, Low-E 180, Low-E i89

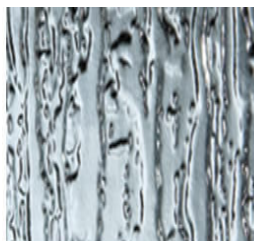
## Decorative Glass and Tints



Gluechip



Standard Obscure



Rain



Narrow Reed



Satin Etch



White Laminated



Bronze Tint



Gray Tint

Color tint images represent color tint example only. Decorative glass images may not be an accurate representation. Contact a Sierra Pacific Representative for additional information.



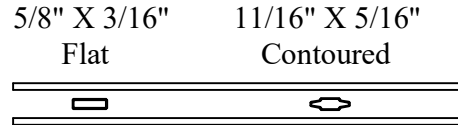
## SECTION 4

# GRILLES

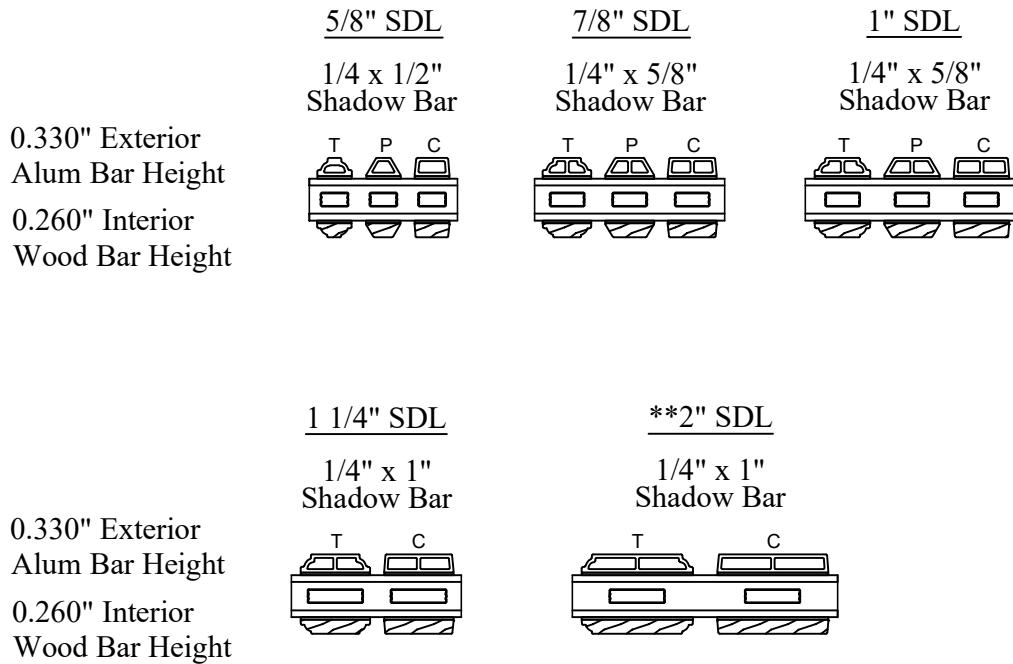


SIMULATED DIVIDED LITE  
GRILLES BETWEEN THE GLASS

## Grille Between Glass



## Clad Simulated Divided Lite (SDL)



NOTE: \*\*2" Bar widths are not available in a radius.

SDL BAR STYLE	
T	Traditional
P	Putty
C	Contemporary



## SECTION 5

# HARDWARE FINISHES



## Window Hardware Colors



White



Bright  
Brass



Satin  
Brass



Satin  
Nickel



Polished  
Chrome



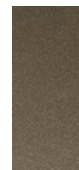
Brushed  
Chrome



Oil  
Rubbed  
Forever  
Bronze



Matte  
Black



Bronze



Champagne



Chestnut  
Bronze

## Door Hardware Colors



White



Satin  
Brass



Satin  
Nickel



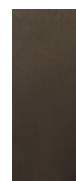
Polished  
Chrome



Brushed  
Chrome



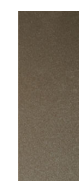
Stainless  
Steel



Oil  
Rubbed  
Forever  
Bronze



Matte  
Black



Bronze  
Metallic



Oil  
Rubbed  
Bronze



Espresso

\*Visit our website at [www.SierraPacificWindows.com](http://www.SierraPacificWindows.com) for specific product hardware color availability.





SECTION 6

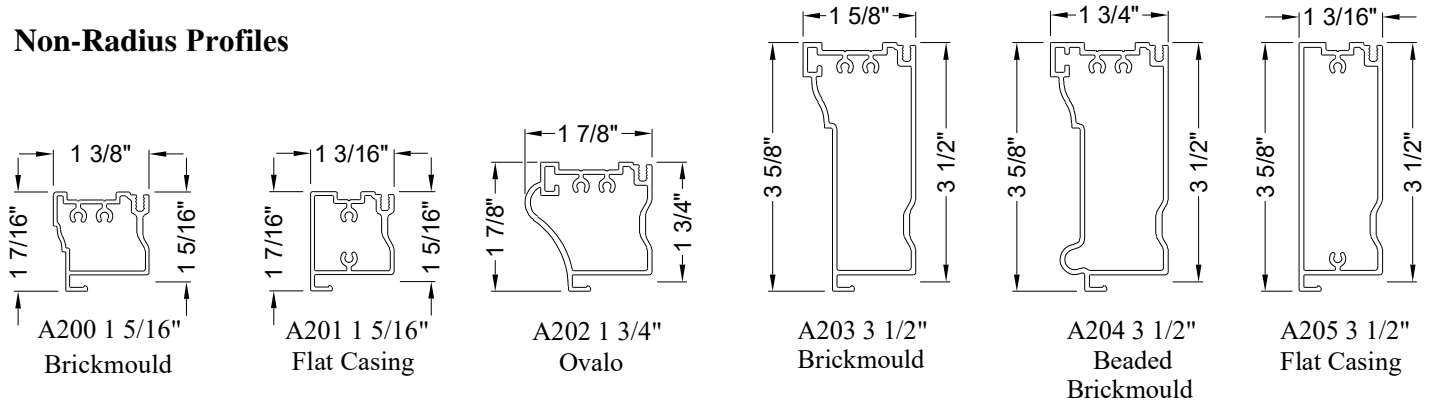
# EXTERIOR TRIM



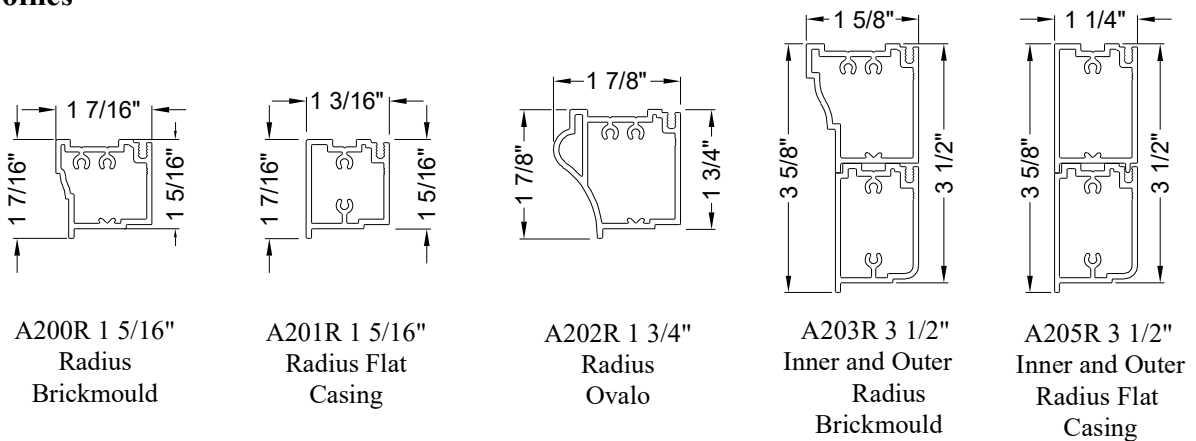
## CLAD ACCESSORIES

## Conventional Profiles

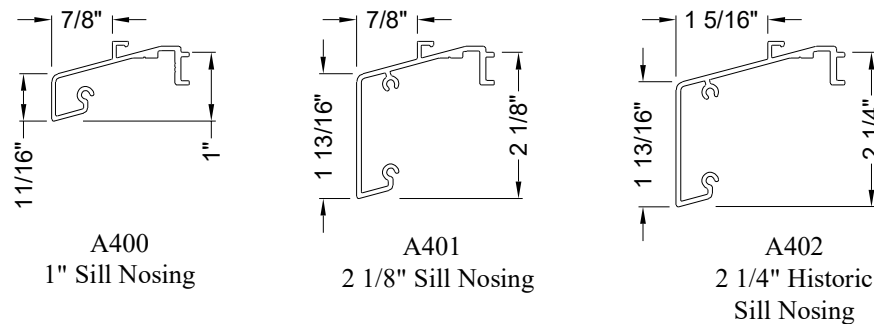
### Non-Radius Profiles



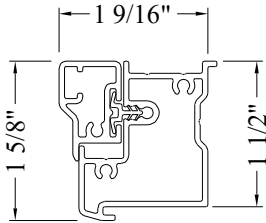
### Radius Profiles



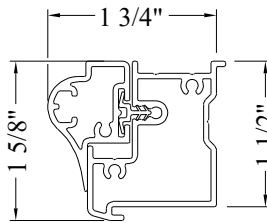
### Sill Profiles



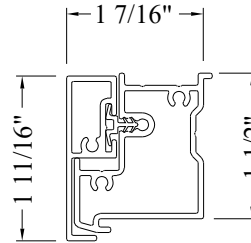
## Easy Trim Profiles



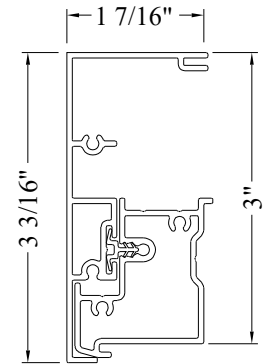
Base w/2"  
Brickmould  
Snap Cover



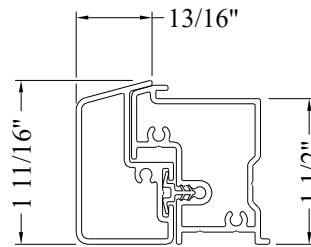
Base w/Ovalo  
Brickmould  
Snap Cover



Base w/2"  
Flat Casing  
Snap Cover

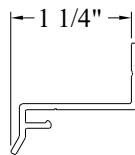


Base w/3 1/2"  
Flat Casing  
Snap Cover

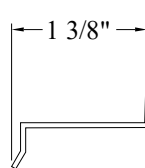


Base w/Sill Nose  
Snap Cover

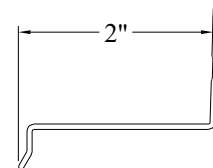
## Clad Drip Cap



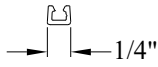
A514  
Drip Cap



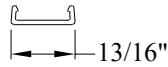
Drip Cap  
No/Leg



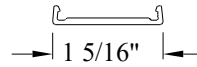
Extended  
Drip Cap  
No/Leg



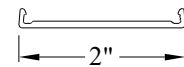
A500 Tight Mull  
Connector



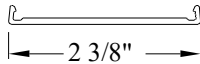
A501 1/4" Plate  
Mull Connector



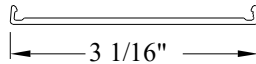
A503 1" Mull  
Connector



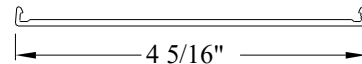
A504 1 3/4" Mull  
Connector



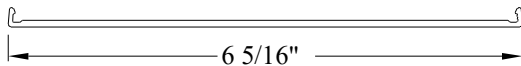
A505 2" Mull  
Connector



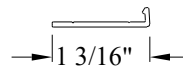
A506 2 3/4"  
Mull Connector



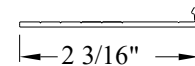
A507 4"  
Mull Connector



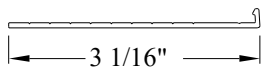
A508 6"  
Mull Connector



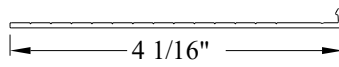
A515 1 3/16"  
Trim Extender



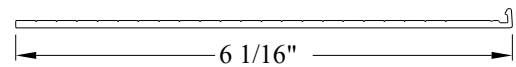
A516 2 3/16"  
Trim Extender



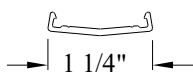
A517 3 1/16"  
Trim Extender



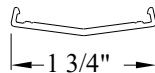
A518 4 1/16" Trim  
Extender



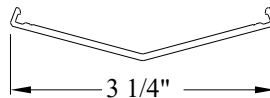
A519 6 1/16"  
Trim Extender



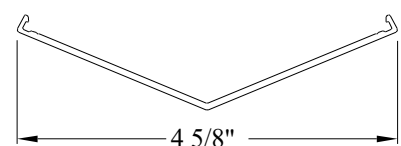
A509 10°  
Mull Connector



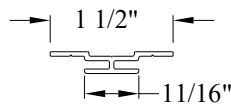
A510 15°  
Mull Connector



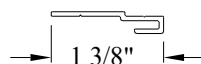
A511 30°  
Mull Connector



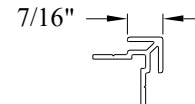
A512 45°  
Mull Connector



A520 Full  
Receptor



A521 Half  
Receptor



A522 Corner  
Receptor



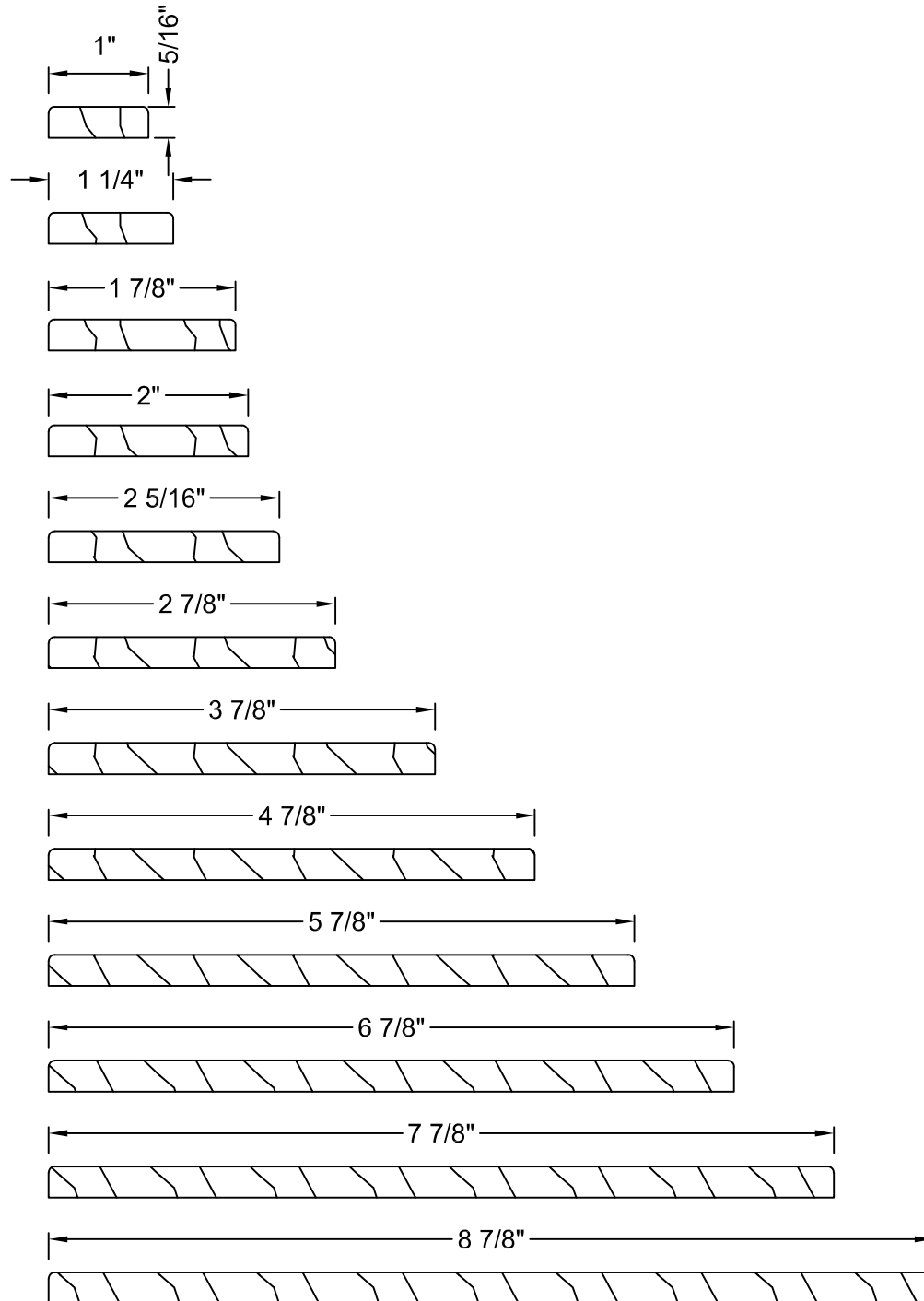
## SECTION 7

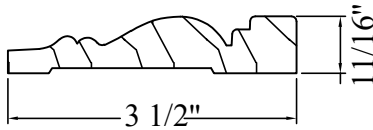
# DECORATIVE TRIM



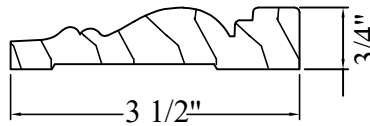
## WOOD INTERIOR



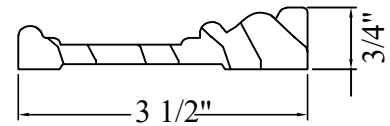




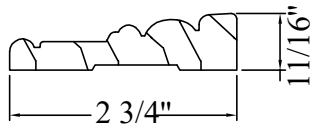
Provincial



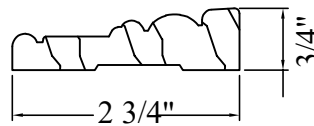
Tudor



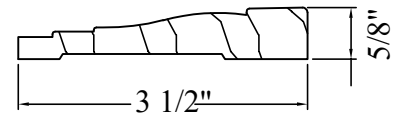
Tradesman



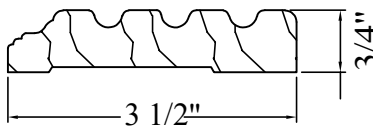
Heritage



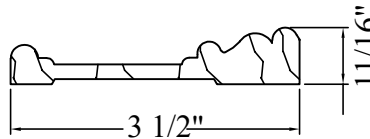
Heritage II



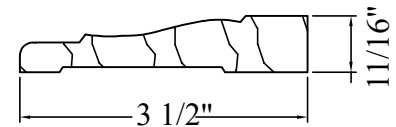
Prairie



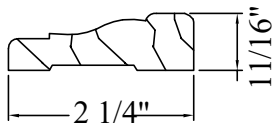
Continental



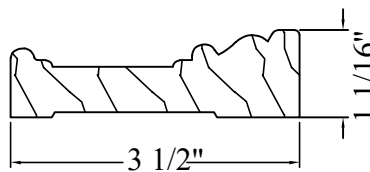
Craftsman



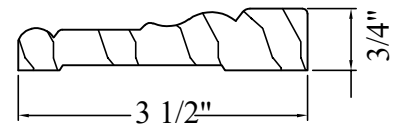
Colonial



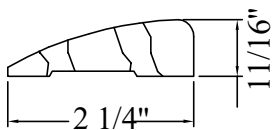
Traditional



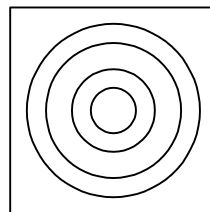
Tradesman II



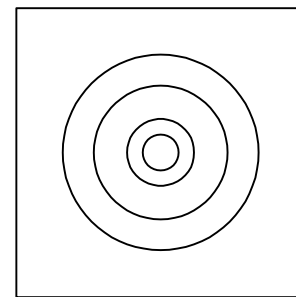
Regal



Contemporary



2 1/2" Rosette



3 1/2" Rosette



3/16" x 9/16" (4 3/4" Jamb)



7/16" x 9/16" (5" Jamb)



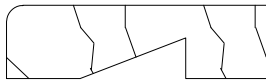
9/16" x 9/16" (5 1/8" Jamb)



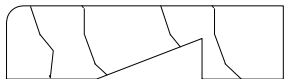
3/4" x 9/16" (5 5/16" Jamb)



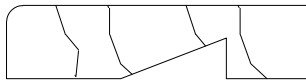
1 7/8" x 9/16" (6 7/16" Jamb)



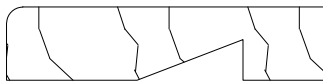
2" x 9/16" (6 9/16" Jamb)



2 1/8" x 9/16" (6 11/16" Jamb)



2 5/16" x 9/16" (6 7/8" Jamb)



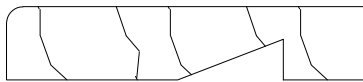
2 7/16" x 9/16" (7" Jamb)



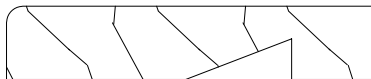
2 9/16" x 9/16" (7 1/8" Jamb)



2 11/16" x 9/16" (7 1/4" Jamb)



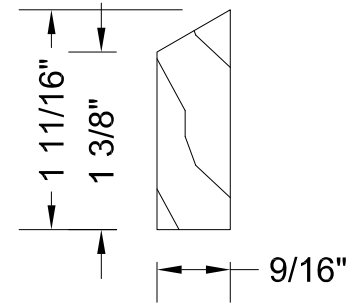
2 3/4" x 9/16" (7 5/16" Jamb)



2 13/16" x 9/16" (7 3/8" Jamb)

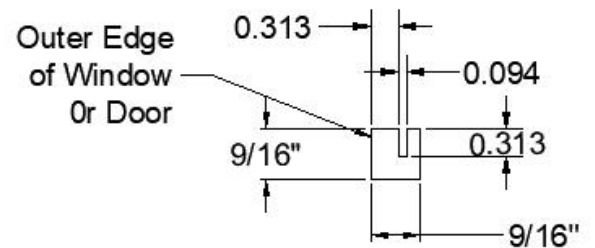


3 9/16" x 9/16" (8 1/8" Jamb)



Interior Bow  
Jamb Extension  
4-9/16" Jamb (2 Required)

Drywall Kerf  
Standard Dimensions



Minimum extension  
jamb depth with kerf



## SECTION 8

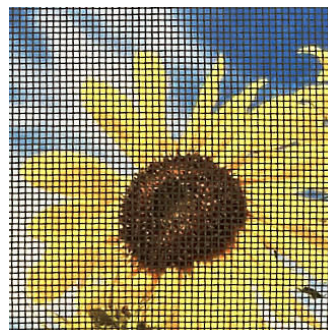
# SCREENS



## Screen Mesh



18 X 18 Mesh  
View Clear



20 X 20 Mesh  
View Clear Plus

## Window Screen Types



\*FlexScreen



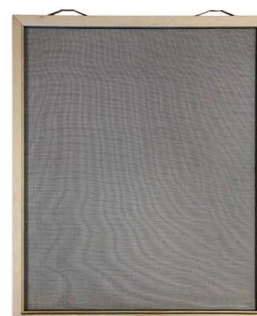
Retractable  
Screen



Hinged Wood  
Screen



Aluminum  
Screen (Non-  
Rectangle Units  
Only)



Wood Veneer  
Wrapped Screen  
(Non-Rectangle  
Units Only)

See specific product pages on our website to browse the screen selections available on each window product type.

\*Flexscreen is not available on non-rectangle units.



**Door Screens**

## Sliding Screen

Images and additional information coming soon.

## Hinged Screen

Images and additional information coming soon.